

# Complex Environmental issues that need tackling Kings Heath BID - 11th July 2018



## Issue 1

Bins that have not been emptied for weeks. These are on land off Poplar Road. The bins are used by occupants of the flats above the shops.

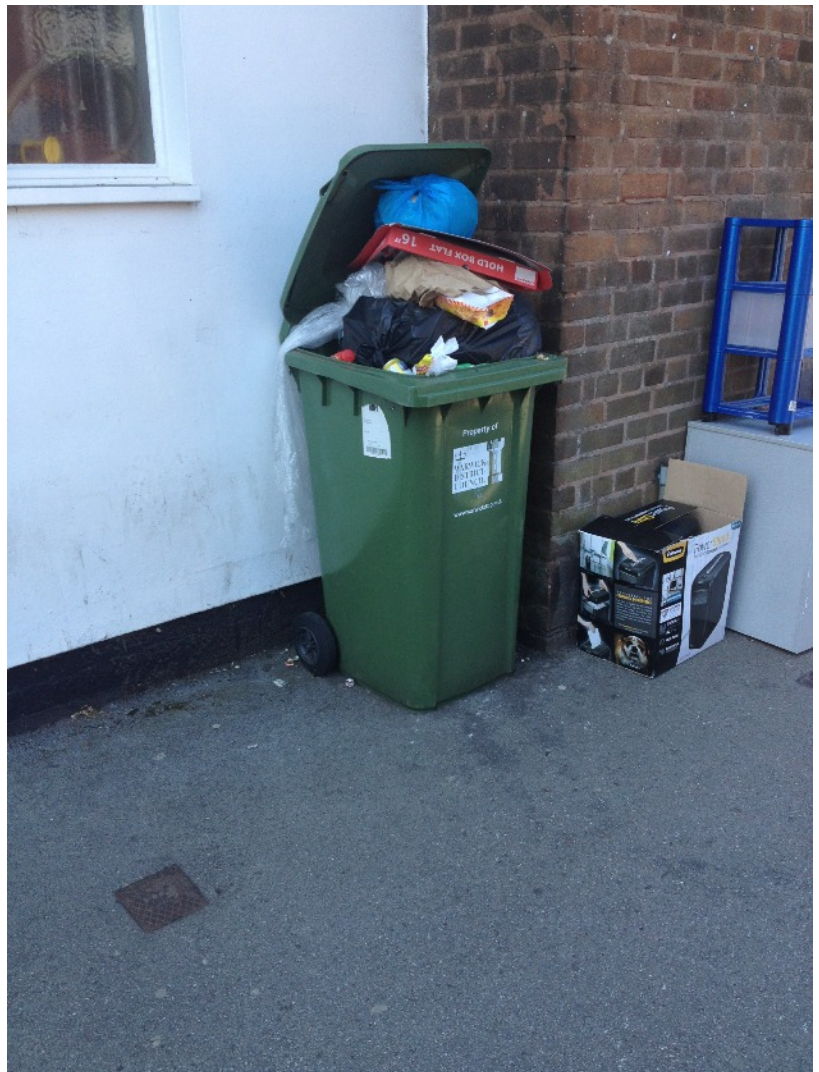
Issue reported to Fleet and Waste Management, Birmingham City Council, on 29<sup>th</sup> June. A chase-up e-mail was sent on 10<sup>th</sup> July.

## Issue 2

Bin not been emptied for weeks. This is on York Road.

The wheelie bin is owned by Warwickshire District Council and has been taken from Leamington Spa

Issue reported to Fleet and Waste Management, Birmingham city Council, on 28<sup>th</sup> June. A chase-up e-mail was sent on 10<sup>th</sup> July.



# Complex Environmental issues that need tackling

## Kings Heath BID - 11th July 2018



### Issue 3

Barriers on pavement at the junction of High Street and Poplar Road. These have been in situ for over three months.

Reported to Council on 20<sup>th</sup> July, who in turn reported it to Amey. Chase up e-mail sent to Amey on 10<sup>th</sup> July.